

WANT TO KNOW THE COST

of earning a degree with the help of a TEACH Scholarship?

WE'VE DONE THE MATH FOR YOU!

The cost estimates below are based on **one semester of tuition** at the average cost for **6 credit hours** at a community college and for a **Star-Rated Program**.



RECIPIENT



OWES
10%
OF TOTAL
\$-120.00

STUDENT ACCESS
STIPEND
(\$100) APPLIED
\$-20.00

STAR-RATED
STIPEND
(\$150) APPLIED
\$130.00 CHECK

CHECK ISSUED EACH SEMESTER. PLUS \$300 BONUS FROM T.E.A.C.H. & BONUS OR RAISE FROM EMPLOYER AT CONTRACT END.

WANT TO KNOW THE COST

of earning a degree with the help of a TEACH Scholarship?

WE'VE DONE THE MATH FOR YOU!

The cost estimates below are based on **one semester of tuition** at the average cost for **6 credit hours** at a community college and for a **Star-Rated Program**.



RECIPIENT



OWES
10%
OF TOTAL
\$-120.00

STUDENT ACCESS
STIPEND
(\$100) APPLIED
\$-20.00

STAR-RATED
STIPEND
(\$150) APPLIED
\$130.00 CHECK

CHECK ISSUED EACH SEMESTER. PLUS \$300 BONUS FROM T.E.A.C.H. & BONUS OR RAISE FROM EMPLOYER AT CONTRACT END.

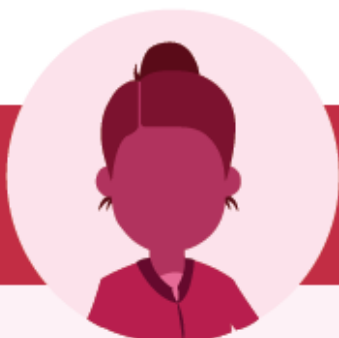
EMPLOYER

OWES
10%
OF TOTAL
\$-120.00

RELEASE
TIME
(\$528) REIMBURSED
\$408.00

STAR-RATED
STIPEND
(\$150) APPLIED
\$558.00 CHECK

CHECK ISSUED EACH SEMESTER. MINUS RELEASE TIME \$ ACTUALLY PAID THROUGH EMPLOYEE WAGES & ISSUING RAISE OR BONUS AT CONTRACT END.



EMPLOYER

OWES
10%
OF TOTAL
\$-120.00

RELEASE
TIME
(\$528) REIMBURSED
\$408.00

STAR-RATED
STIPEND
(\$150) APPLIED
\$558.00 CHECK

CHECK ISSUED EACH SEMESTER. MINUS RELEASE TIME \$ ACTUALLY PAID THROUGH EMPLOYEE WAGES & ISSUING RAISE OR BONUS AT CONTRACT END.



INFO: www.mlaeyc.org/professional-development/t-e-a-c-h-scholarships/ | 866.648.3224

INFO: www.mlaeyc.org/professional-development/t-e-a-c-h-scholarships/ | 866.648.3224